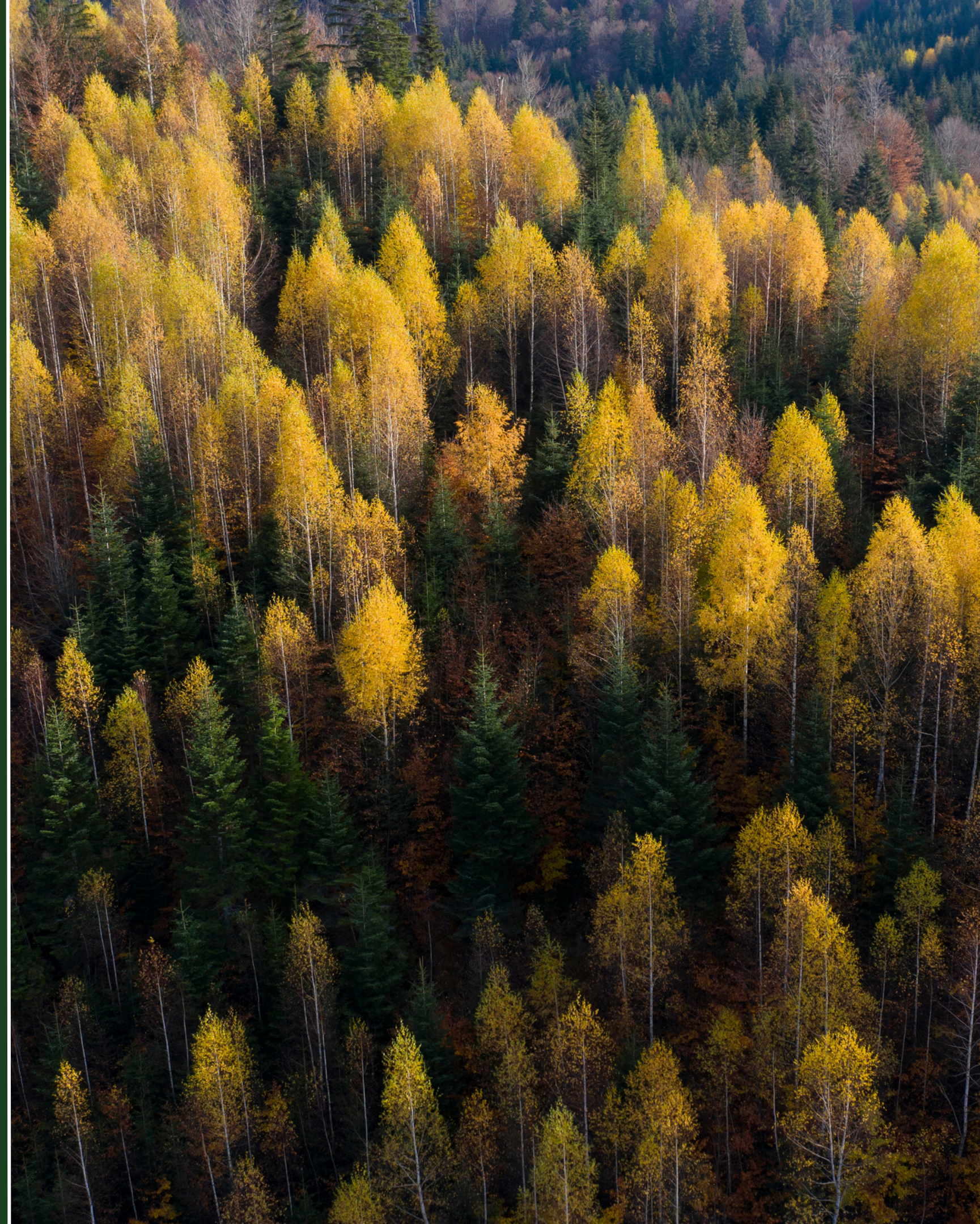


PROJECT PRESENTATION

SILVADOR

CLIMATE ACTION





INTRODUCTION:

—● **Verra Registry** number 4511

—● **Silvador Company SRL** and **Forest Capital SRL** own **private forestland** in Romania and are **developing** a forest, carbon credit project to **achieve** greenhouse gas (GHG) emission **reductions** and **removals** through the **conservation** of logged to protected (LtPF) privately owned forests.

—● The project **will be implemented** following the Verified Carbon Standard (VCS) VM0012 – Improved Forest Management in Temperate and Boreal Forests (LtPF), v1.2 **methodology**.



OUR GOALS:

NR. 1

Reduce Greenhouse Gas (GHG) emissions through the **deferral** of harvesting activities and contribute to a **sustainable future** where forests have an **invaluable role**.

NR. 2

Create **market value** for the essential ecosystem services **provided** by **forest** to facilitate **future** economic development.

NR. 3

Increase **economic diversity** by **selling** carbon credits.

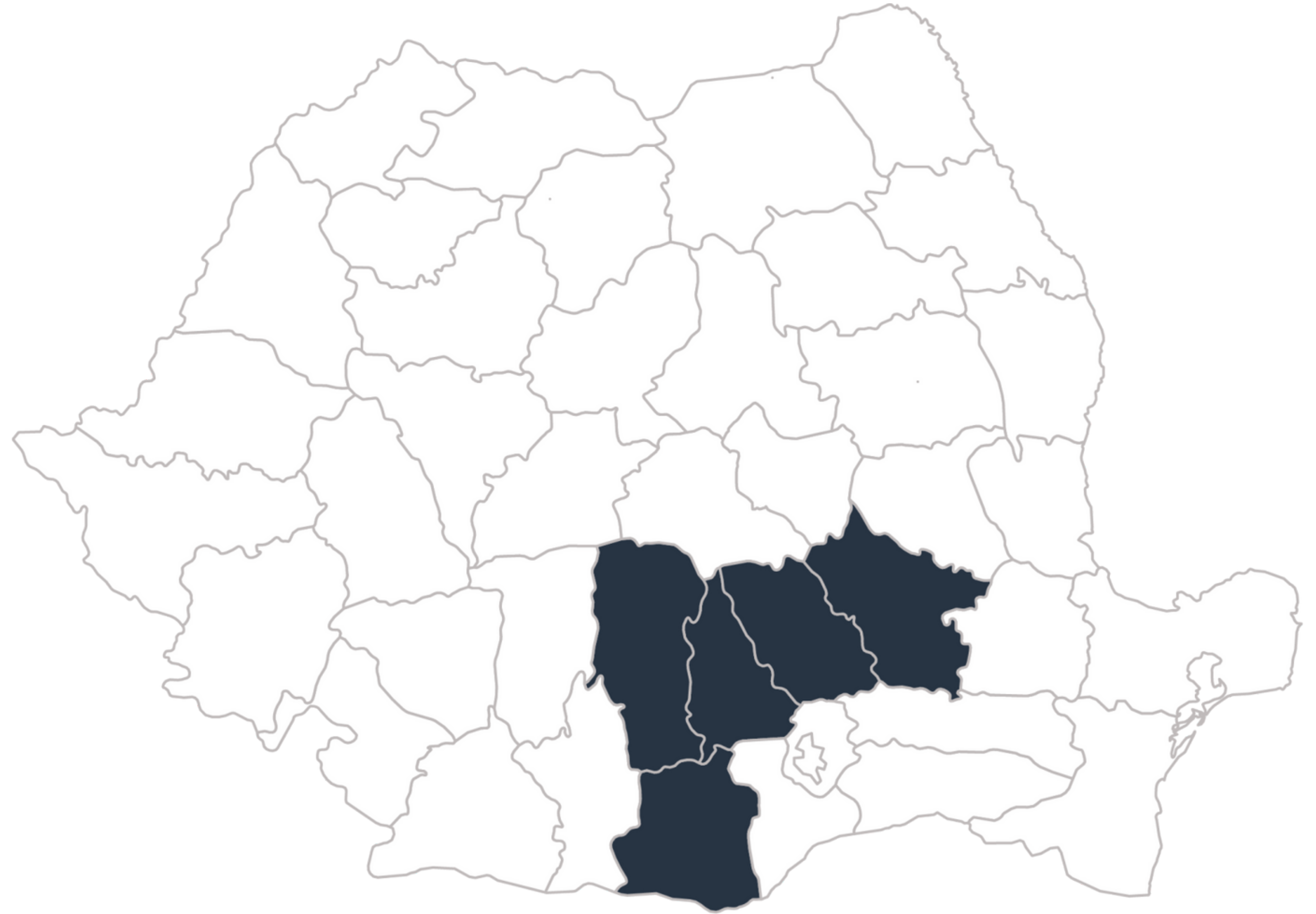
PROJECT

HIGHLIGHTS:

- Premier VCS/SDVISTA **accredited project** in Europe
- **Project area:** 1,538 ha
- Regional **climate impact** in Europe, especially CEE
- **Significant** annual **production** of credits
- Project **owned** and **administrated** by responsible, local **Romanian** investors



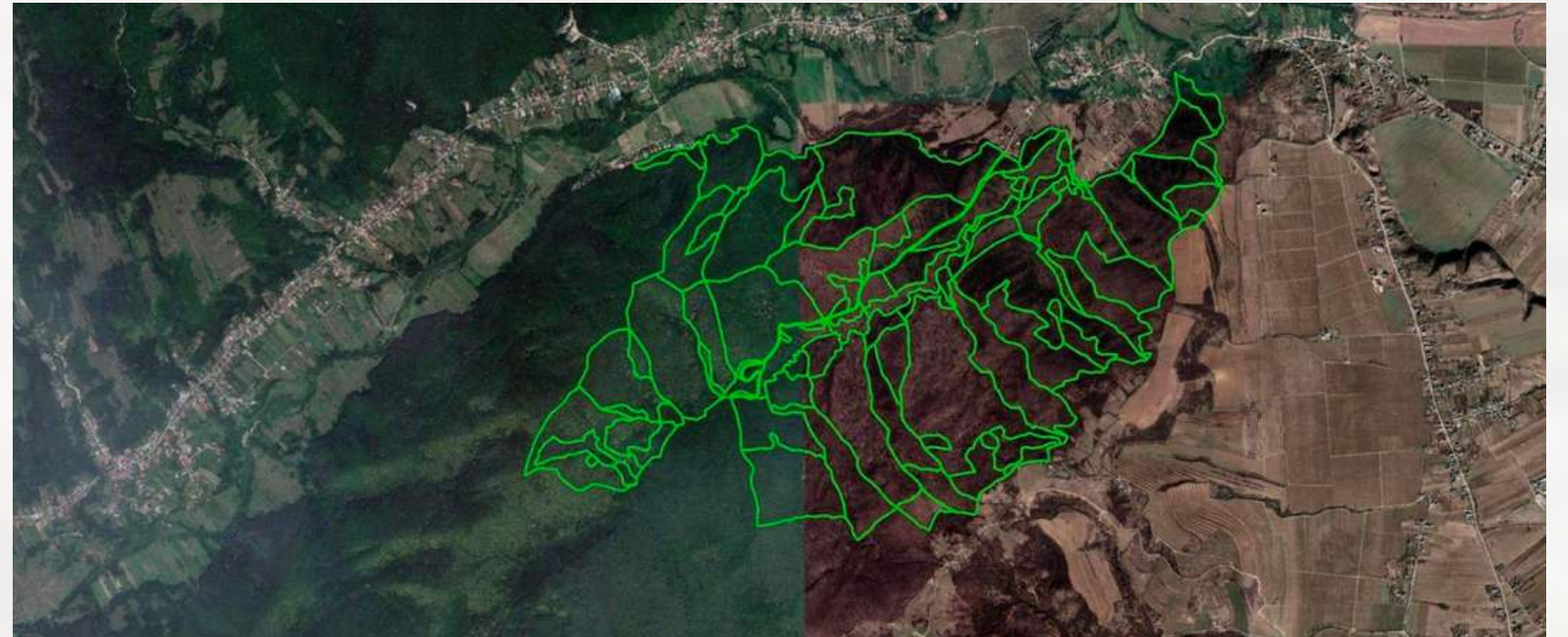
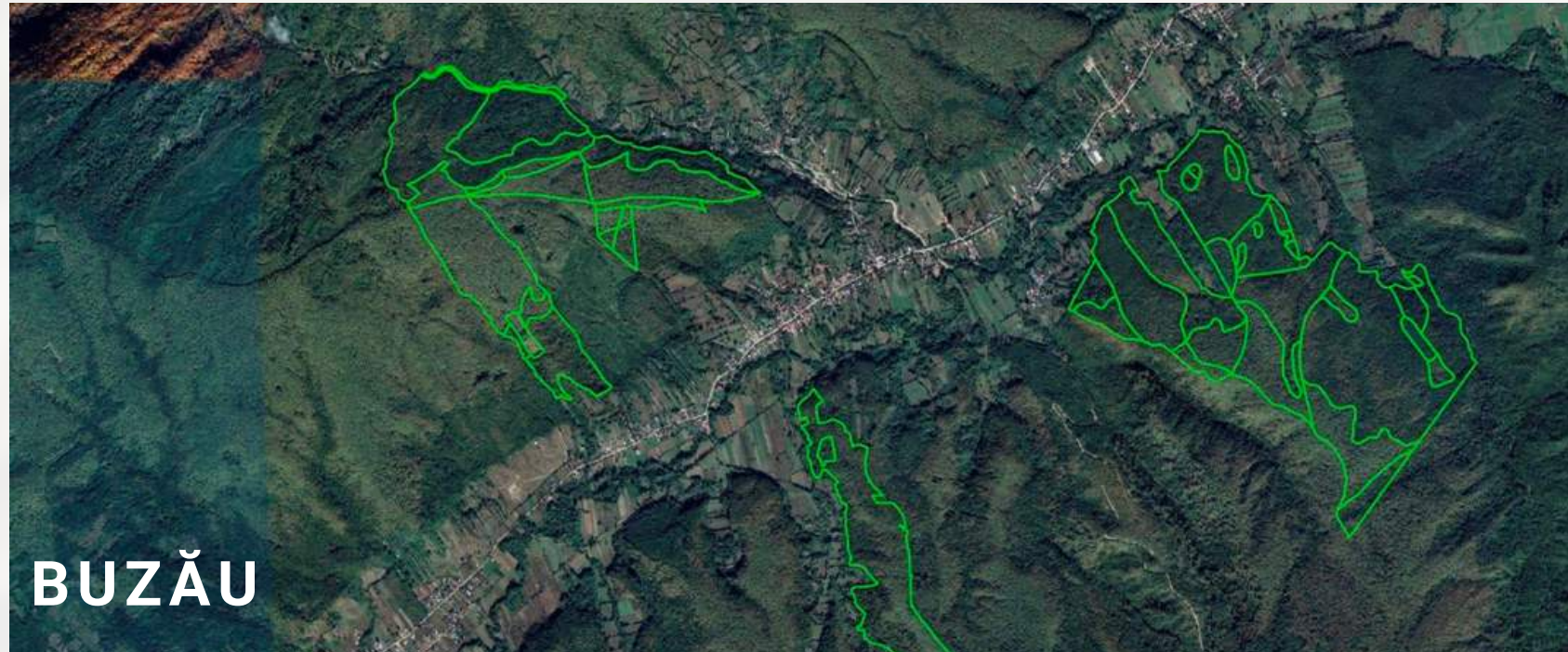
- **Location:** Romania (Buzău and Dâmbovița Counties) with future instances in Arges, Teleorman and Prahova
- **Geographic region:** The Romanian Subcarpathians
- Project **Activity** Instances (area): 1,538 ha
- Dominant tree **species:** Oak, Beech, Hornbeam



PROJECT AREA:

SILVADOR CLIMATE ACTION

FORESTS LOCATION



VCS (VERIFIED CARBON STANDARD)

METHODOLOGY

Methodology **comparatively quantifies** Greenhouse Gas (GHG) emission **reductions/removals** on lands where tree harvesting is the **normal** business use for the forested lands, and harvesting is **deferred** in the project scenario.

MASSIVE EMISSION REDUCTIONS:

VCS project is Projected to reduce approx. 374,552 thousand tCO₂e of emissions over the life of the project.

COLLABORATIVE CLIMATE ACTION:

Grouped Project

OUR ONGOING PROJECT JOURNEY:

30-year project period

PROJECT DURATION:

Project period: August 1st, 2020 to July 31st, 2050

SUSTAINABLE DEVELOPMENT **VERIFIED** IMPACT STANDARD **(SD VISTA):**

——● Globally **recognized** standard managed by **VERRA**

——● Principle is to advance **goals set** out by **United Nations 2030** Agenda for Sustainable Development.

——● Powerful framework that **can help** companies **achieve** their ESG goals



SDGS THAT SCA IS ASSOCIATED WITH:



RESPONSIBLE CONSUMPTION AND PRODUCTION

By promoting **sustainable forest management practices**, Silvador encourages **responsible use** of natural resources.

Our educational programs **empower** local communities to adopt practices, **reducing** waste and resource depletion.

15 LIFE ON LAND



LIFE ON LAND

Our initiative **conserves** and **restores** terrestrial ecosystems, promoting **biodiversity** and **safeguarding** endangered species.

By working with **local communities**, we also combat deforestation and protect habitats for **future generations**.

13 CLIMATE ACTION



CLIMATE ACTION

The main objective of the project is to actively combat **climate change** by focusing on reforestation and forest preservation as **effective measures** to sequester carbon, thereby **directly** aligning with the targets outlined in Sustainable Development Goal 13.



ESTIMATED EMISSIONS REDUCTIONS

- ANNUAL MONITORING:
Annual monitoring **efforts** that **drive** our commitment to a **greener future**.
- TOTAL ESTIMATED EMISSION REDUCTIONS:
374,552 tCO₂e **equivalent** to:

80,000

HOMES' ENERGY
USE FOR ONE YEAR



105,000

PASSENGER
VEHICLES





PROJECT FEATURES

- Initial **monitoring period**: 2020*-2022
- Non-permance **risk**: 15%
- **Uncertainty**: 1.5%
- **Leakage**: 0%
- **Removals vs. Reduction**: anticipated to be 50/50 (to be confirmed; age class favorable for increased removals)

PROJECT MONITORING



Detailed **satellite imagery** will be acquired for the year 2024 to assess the areas for change disturbances.



The **permanent monitoring sample plots** (31 plots) was set in 2022 by using terrestrial laser scanning techniques.



Monitoring and reporting on status of project area will occur in **5-year intervals**.

Monitoring identifies changes to:

- Natural Disturbances (e.g., wind, fire, insect events)
- Harvesting (legal and illegal >4ha)
- Planned activities





OTHER **EU FOREST** CARBON PROJECTS



7 other European **NBS** projects listed on the **VERRA** registry (insignificant project sizes and/or weaker baseline-scenarios or different types (carbon farming)).



No other Sustainable Development Verified Impact Standard (SDVISTA) **listed** or **registered**.

[HTTPS://REGISTRY.VERRA.ORG/APP/PROJECTDETAIL/VCS/4511](https://registry.verra.org/app/projectdetail/vcs/4511)

SILVADOR CLIMATE ACTION

Contact us

PHONE

+40 761 113 870

E-MAIL

climate@silvador.ro

WEBSITE

www.silvador.ro

